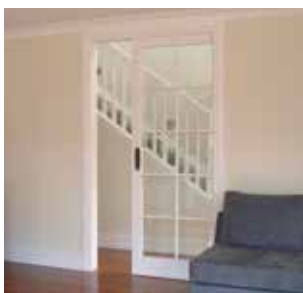




*CS TimberFormed single unit with classical joinery door*



*Single with glazed door*



*Single with NewYorker door*



*Single with NewYorker door*



## Features

**CS TimberFormed** is the original cavity slider, first engineered in 1986. Our design principles were simple: "To create a high quality cavity slider that was reliable and ran very smoothly". In short, it's quite simply the leading cavity slider on the market.

- Manufactured to your specification.
- Designed to fit into standard 90mm wall framing.
- All aluminium components screwed together for strength and reliability.
- Special jamb timbers and profiles available on request.
- Maximum door weight: 240kg.
- Supplied fully assembled, ready for on-site installation.
- Brush seals available on request.

## Technical Information

Useful formulas (online calculator on our website)

Dimension Required	Single	Bi-Parting
Trim height*	DH + 95	DH + 95
Trim width*	(DWx2) + 30	(DWx4) + 10
Distance between jambs*	DW - 31	(DWx2) - 42
Distance over jambs (Arch)	DW + 13	(DWx2) + 6
Distance over jambs (Grvd)	DW + 31	(DWx2) + 20
Floor to top of head (Arch)	DH + 38	DH + 38
Floor to top of head (Grvd)	DH + 49	DH + 49
Floor to underside of head*	DH + 18.5	DH + 18.5
All dimensions in millimetres. DH=Door Height, DW=Door Width * = Same calculations for Architrave (Arch) & Grooved (Grvd) jambs		

### How to specify (example)

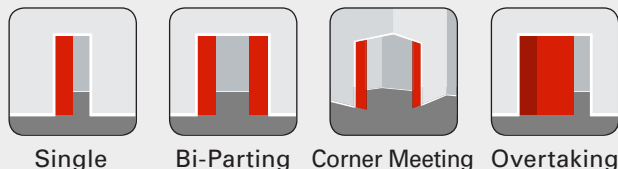
Product:	~ CS TimberFormed Cavity Slider
Location:	~ Lounge/Dining
Door leaf dimensions:	~ 2400mm x 1200mm
Door type:	~ 38mm joinery door
Door finish:	~ Paint Quality
Single or Bi-Parting:	~ Single
Jamb type & finish:	~ Pine flat (for architraves)
Framing material & size:	~ 90mm timber framing
Wall lining thickness:	~ 10mm
Door gear type:	~ CS 100kg SofStop®
Handle type:	~ CaviLock CL400 Passage

Full specifications: [www.masterspec.co.nz](http://www.masterspec.co.nz) or [www.natspec.com.au](http://www.natspec.com.au)

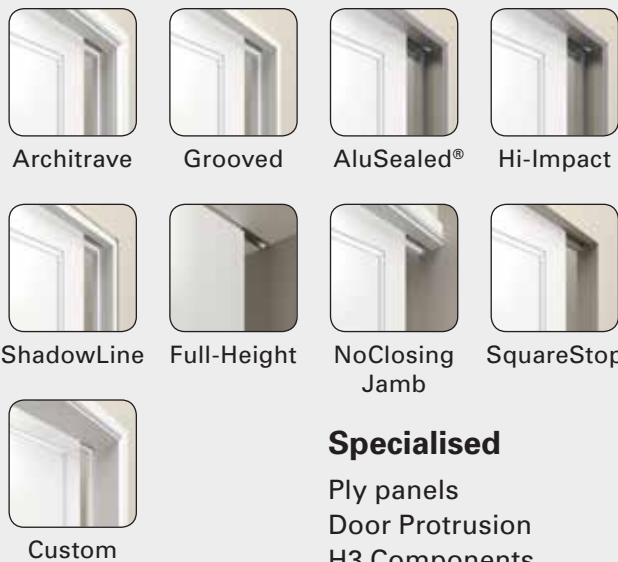
## Options

Incorporate any of the architectural detail options below with the CS TimberFormed cavity slider to create a specific look or to provide a unique solution to your design requirements.

### Configurations



### Jamb Options



### Specialised

Ply panels  
Door Protrusion  
H3 Components  
BraceWall®†

### Operation



### Suitable Door Types

Can be specified with almost any choice of door including our **CS DoorLeaves** range.

CS TimberFormed with 4-Lite CS NewYorker door



Drawings are not to scale. All dimensions in mm.



**CS FOR DOORS NZ**  
0800 754 337



[www.csfordoors.co.nz](http://www.csfordoors.co.nz)  
info@csfordoors.co.nz



[www.cavitysliders.com.au](http://www.cavitysliders.com.au)  
info@cavitysliders.com.au



**CS Cavity Sliders AU**  
1800 975 433